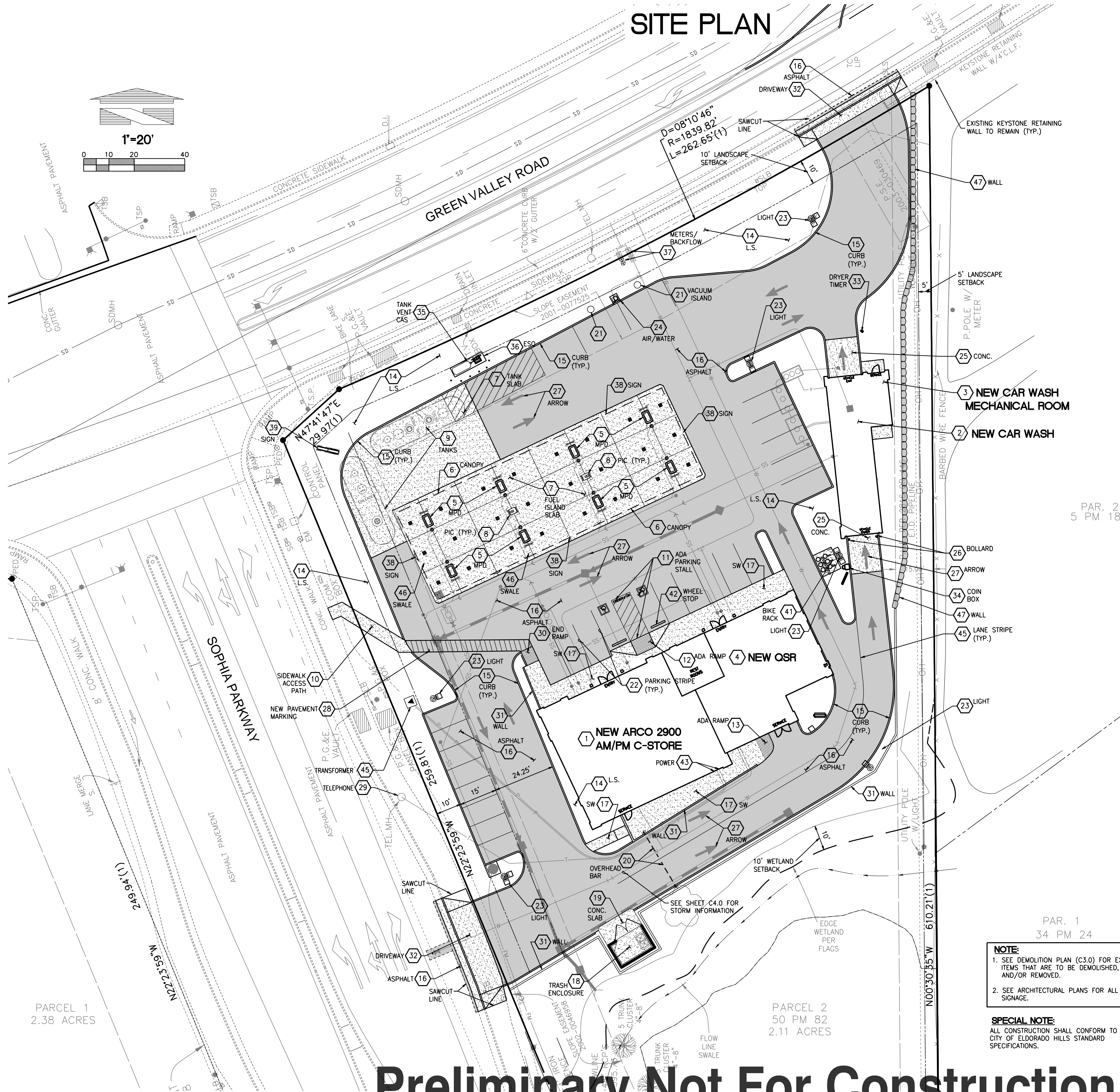
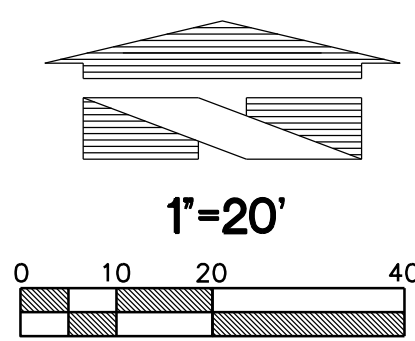


# ARCO AM/PM - ELDORADO HILLS, CALIFORNIA

## SITE PLAN



PARCEL 1  
2.38 ACRES

PARCEL 2  
50 PM 82  
2.11 ACRES

**NOTE:**  
1. SEE DEMOLITION PLAN (C3.0) FOR EXISTING ITEMS THAT ARE TO BE DEMOLISHED, RELOCATED, AND/OR REMOVED.  
2. SEE ARCHITECTURAL PLANS FOR ALL ON-SITE SIGNAGE.

**SPECIAL NOTE:**  
ALL CONSTRUCTION SHALL CONFORM TO THE CITY OF ELDORADO HILLS STANDARD SPECIFICATIONS.

### SITE DEVELOPMENT NOTES:

1. NEW 2900 ARCO AM/PM CONVENIENCE STORE 2824 S.F. SEE ARCHITECTURAL PLANS.
2. NEW CARWASH BUILDING, 2251 S.F. SEE ARCHITECTURAL AND CAR WASH PLANS.
3. NEW MECHANIC ROOM. SEE ARCHITECTURAL AND CAR WASH PLANS.
4. NEW RESTAURANT. SEE ARCHITECTURAL PLANS.
5. NEW 8 MULTI-PRODUCT DISPENSERS (MPD'S) WITH ISLAND END BOLLARD PROTECTION, SEE TANK DRAWING FOR DESIGN.
6. NEW 38'x116' FUELING ISLAND CANOPY PER ARCHITECTURAL PLANS.
7. NEW CONCRETE FUELING ISLAND SLAB AND UNDERGROUND STORAGE TANK SLAB. A 6 INCH REINFORCED CONCRETE SLAB. SEE DETAIL SHEET 8/C6.1
8. NEW SINGLE SIDED PAYMENT ISLAND CASHIER (PIC) UNIT ON A CONC. RAISED ISLAND. SEE DETAILS ON CIVIL SHEET C6.2
9. NEW UNDERGROUND GASOLINE & DIESEL STORAGE TANKS. SEE PETROLEUM (TK) TANK DRAWINGS FOR WORK RELATED TO THESE TANKS.
10. NEW ACCESSIBLE PATH FROM EX. SIDEWALK ON SOPHIA PARKWAY TO STORE ENTRANCE. 4 FOOT WIDE MINIMUM 4 INCH THICK CONCRETE WALKWAY ELEVATED ABOVE PAVEMENT SURFACE. MAXIMUM 5.0% SLOPE IN THE DIRECTION OF TRAVEL; MAXIMUM 2.0% CROSS SLOPE. PER DETAIL 6/C6.1
11. NEW ACCESSIBLE PARKING STALL WITH VAN LOADING SPACE INCLUDING SIGNS AND PAVEMENT SYMBOLS PER DETAIL 1-6/C6.0
12. NEW ACCESSIBLE CURB RAMP. SEE DETAIL 1-6/C6.0. NOTE: RAMP IS 8 FEET WIDE AT VAN SPACE.
13. NEW ACCESSIBLE CURB RAMP. SEE DETAIL 9/C6.0.
14. LANDSCAPE PLANTING AREAS WITH IRRIGATION. SEE LANDSCAPE PLANS.
15. NEW CONCRETE BARRIER SEE DETAIL 5/C6.1
16. NEW ASPHALT PAVEMENT PER DETAIL 4/C6.1
17. NEW MINIMUM 4 INCH THICK CONCRETE SIDEWALK. WIDTHS SHOWN ON C2.1. MAX. 2.0% CROSS SLOPE. PER DETAIL 10/C6.1
18. NEW TRASH ENCLOSURE PER JURISDICTIONAL REQUIREMENTS SEE DETAIL SHEET C6.4 OR PURVEYOR STANDARD. PROVIDE 6 INCH THICK REINFORCED CONCRETE APRON NOTE 17.
19. NEW TRASH ENCLOSURE 6 INCH THICK REINFORCED CONCRETE SLAB PER DETAIL 7/C6.1
20. NEW OVERHEIGHT WARNING BAR/ENTRANCE SIGN BY GC SEE DETAIL 1/C6.3
21. NEW VACUUM ISLANDS AND TRASH RECEPTACLES PER DETAIL 7/C6.1
22. NEW PARKING STALLS STRIPING 4 INCHES THICK PAINTED WHITE WITH LENGTHS AS SHOWN ON C2.1. SEE SPECIFICATIONS FOR PAVEMENT MARKING MATERIALS ON C7.1.
23. NEW LOT LIGHT. SEE ELECTRICAL PLANS FOR SPECIFICATION AND DETAIL 2/C6.3 FOR FOUNDATION.
24. NEW AIR/WATER STATION. GC TO PROVIDE CONC. PAD, WATER AND ELECTRICAL PROVISIONS. SEE DETAIL SHEET 1/C6.2
25. NEW CONCRETE PAVEMENT PER DETAIL 11/C6.1
26. NEW BOLLARD PER DETAIL 2/C6.1
27. NEW DIRECTIONAL ARROW PER DETAIL 7/C6.0
28. NEW PAVEMENT MARKING USING 4 INCH THICK AND 3 FEET ON CENTER AT 45 DEGREE ANGLES AS SHOWN.
29. NEW TELEPHONE LINE PER ELDORADO COUNTY REQUIREMENTS. COORDINATE WITH LOCAL TELEPHONE COMPANY FOR INSTALLATION.
30. NEW ACCESSIBLE END RAMP PER DETAIL 10/C6.0
31. NEW RETAINING WALL DESIGNED BY OTHERS.
32. NEW DRIVEWAY PER ELDORADO COUNTY STDS.
33. DRYER TIMER AND PAD PER CARWASH PLANS.
34. COIN BOX AND READER BOARD PER CARWASH PLANS.
35. NEW TANK VENTS AND CLEAN AIR SEPARATOR PER TANK PLANS
36. EMERGENCY SHUTOFF SWITCH PER TANK PLANS
37. NEW WATER METERS AND BACKFLOW PREVENTORS FOR DOMESTIC AND IRRIGATION WATER SERVICE. SEE UTILITY PLAN SHEET C5.0.
38. NEW ARCO CANOPY SIGN. SIGNS UNDER SEPARATE PERMIT.
39. NEW ARCO I.D. SIGN PER ARCHITECTURAL PLANS. SIGN UNDER SEPARATE PERMIT.
40. NEW ICE MERCHANDISER PER ARCHITECTURAL PLANS.
41. NEW BIKE RACK PER ARCHITECTURAL PLANS.
42. NEW WHEEL STOP PER DETAIL 1/C6.1
43. NEW BUILDING POWER METER AND PANEL BOX LOCATION PER PG&E REQUIREMENTS REFER TO PG&E ENGINEERING REQUIREMENTS FOR INSTALLATION REQUIRED BY GC. COORDINATE WITH PG&E FOR INSTALLATION.
44. NEW 4 INCHES THICK LANE STRIPING PAINTED WHITE WITH LENGTHS AS SHOWN ON C2.1. SEE SPECIFICATIONS FOR PAVEMENT MARKING MATERIALS ON C7.1.
45. NEW TRANSFORMER AND POWER LINE PER PG&E REQUIREMENTS REFER TO PG&E ENGINEERING REQUIREMENTS FOR INSTALLATION REQUIRED BY GC. COORDINATE WITH PG&E FOR INSTALLATION.
46. NEW CONCRETE SWALE PER DETAIL SHEET 9/C6.1
47. NEW MODULAR BLOCK RETAINING WALL. DESIGN BY OTHERS.

**CALL USA UNDERGROUND SERVICE ALERT**  
48 HOURS PRIOR TO CONSTRUCTION  
CALL TOLL FREE: 1-800-227-2600

**UTILITY CONFLICT NOTE:**  
THE CONTRACTOR SHALL BE RESPONSIBLE FOR VERIFYING THE LOCATION, DIMENSION, AND DEPTH OF ALL EXISTING UTILITIES WHETHER SHOWN ON THESE PLANS OR NOT BY POTHOLES THE UTILITIES AND SURVEYING THE HORIZONTAL AND VERTICAL LOCATION PRIOR TO CONSTRUCTION. THIS SHALL INCLUDE CALLING UTILITY LOCATE @ 1-800-227-2600 AND THEN POTHOLES ALL OF THE EXISTING UTILITIES AT LOCATIONS OF NEW UTILITY CROSSINGS TO PHYSICALLY VERIFY WHETHER OR NOT CONFLICTS EXIST. LOCATIONS OF SAID UTILITIES AS SHOWN ON THESE PLANS ARE BASED UPON THE UNVERIFIED PUBLIC INFORMATION AND ARE SUBJECT TO VARIATION. IF CONFLICTS SHOULD OCCUR, THE CONTRACTOR SHALL CONSULT BARGHAUSEN CONSULTING ENGINEERS, INC. TO RESOLVE ALL PROBLEMS PRIOR TO PROCEEDING WITH CONSTRUCTION.

CLIENT:

BP WEST COAST PRODUCTS, LLC

18215 72ND AVENUE SOUTH  
KENT, WA 98032  
(425)251-6222  
(425)251-8782 FAX

CIVIL ENGINEERING, LAND PLANNING,  
SURVEYING, ENVIRONMENTAL SERVICES

NO.	DATE	REVISION DESCRIPTION
1		
2		
3		
4		
5	01/29/13	PLND DEV/SPL USE RESUBMITL
6		
7		
8		
9		
10		
11		
12		
13		
14		
15		
16		
17		
18		
19		
20		
21		
22		
23		
24		
25		
26		
27		
28		
29		
30		
31		
32		
33		
34		
35		
36		
37		
38		
39		
40		
41		
42		
43		
44		
45		
46		
47		

SEAL:

**THIS SHEET IS FOR INFORMATION ONLY**

DEVELOPMENT INFORMATION:  
**ARCO NTI**  
2900 am/pm  
w/ 17"x65' CAR WASH  
FUEL CANOPY w/ 8 MPD'S  
AND 1,900 SF Q.S.R.

SITE ADDRESS:  
**GREEN VALLEY ROAD**  
@ SOPHIA PARKWAY  
ELDORADO HILLS, CA

**FACILITY # TBD**

DESIGNED BY:	ALLIANCE Z&M:
CHECKED BY:	BP REPA:
DRAWN BY:	ALLIANCE PM:
VERSION:	PROJECT NO: <b>15593</b>
DRAWING TITLE:	

**SITE PLAN**

SHEET NO:  
**C2.0 OF 6**

# Preliminary Not For Construction